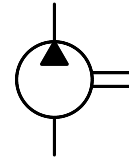


PVM 50 - Series Single Vane Pumps

These pumps are widely used as a source of hydraulic power in mobile application. They combine stable performance and robust construction with a wide range of delivery rates.



Graphic Symbol



Specifications

Model Number	Geometric Displacement cm ³ /rev.	Max. Opr. Pressure Kgf/cm ²	Output Flow and Input Power	Shaft Speed Range r/min.		Mass (Approx.) Kg.	
				Max.	Min.	Flange Mounting	Foot Mounting
PVM50-13	9.5	175	Ref. Page 110, 111 & 112	2000*	600	12	14.7
PVM50-20	14.5						
PVM50-26	19.4						
PVM50-30	21.5						
PVM50-36	26.5						
PVM50-39	28.3						
PVM50-45	31.6						
PVM50-51	36.7						
PVM50-56	40.5	Ref. Page 125					

* For speeds above 2000 r/min., consult factory for information.

Model Number Designation

F-	PVM50	-L	-F	-13	-	-R	A	A	-31	80H01
Special Seals **	Series Number	Type of Mounting	Type of Pipe Connection	Nominal Delivery	Shaft Type	Direction of Rotation	Discharge Port Position	Suction Port Position	Design * Number	Design Standard
As Viewed From Shaft End										
F: For Phosphate Ester Type Fluids (Omit if not required)	PVM50	L: Foot Type F: Flange Type	F: Flange Connection T: Threaded Connection	13 20 26 30 36 39 45 51 56 *1	None: Std. Shaft. 1: Special Shaft (For 51 & 56 Capacity Only)	R: Clockwise (Normal) L: Counter Clockwise			31	80H01

* Design numbers subject to change from 30 to 39, but installation dimensions remain as shown.

* For instructions regarding changing the port positions, consult CNIP INDIA LTD.

** Before ordering the Special Seals, consult CNIP INDIA LTD.

*1 Threaded type connection is not available for 56 Capacity.

■ Cartridge Kit Model Number

CPVM50	-13	-R	-31H01
Model Number	Nominal Delivery	Shaft Rotation	Design No.
CPVM50	13	R: Clockwise (Normal)	31H01
	20		
	26		
	30	L: Counter- Clockwise	
	36		
	39		
	45		
	51		
	56		

* For instructions regarding replacing cartridge kit, consult CNIP INDIA LTD.

■ Mounting Details

For mounting details please refer page No. 109.

■ Flanges

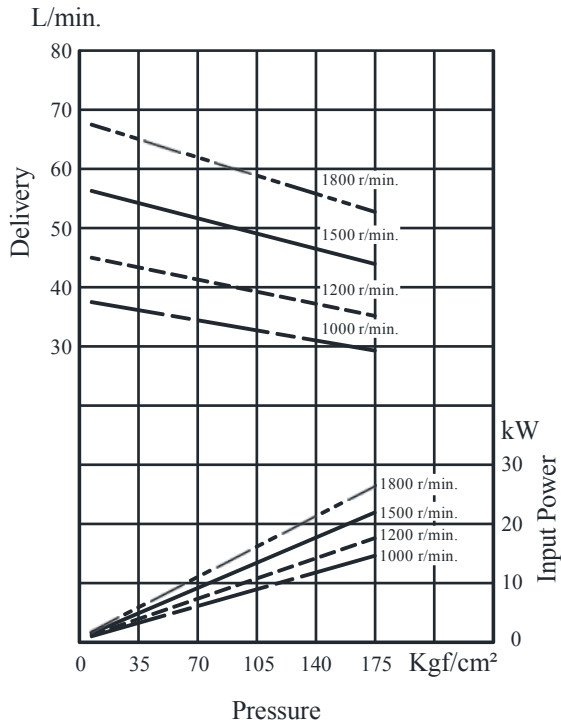
Note: Please refer page no. 749 for flange details.

■ Spare parts list

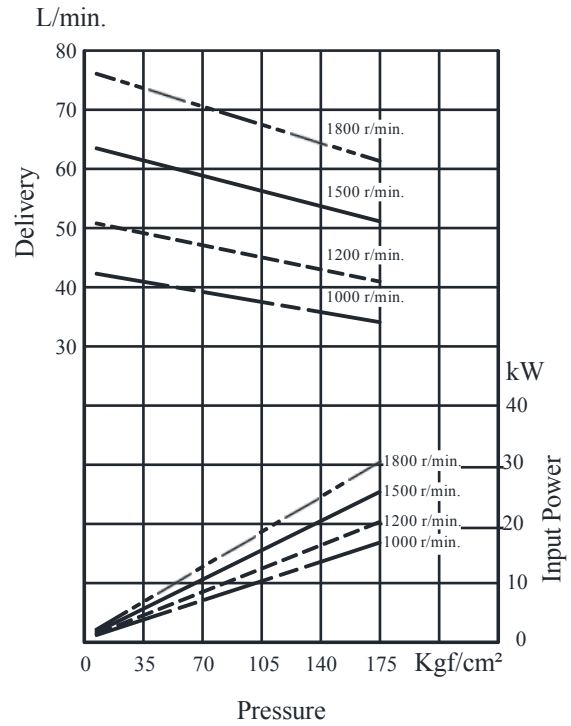
For list of spares please refer page No. 112.

Typical Pump Characteristics Oil Viscosity 20 cSt [ISO VG 32, Temp 50° C]

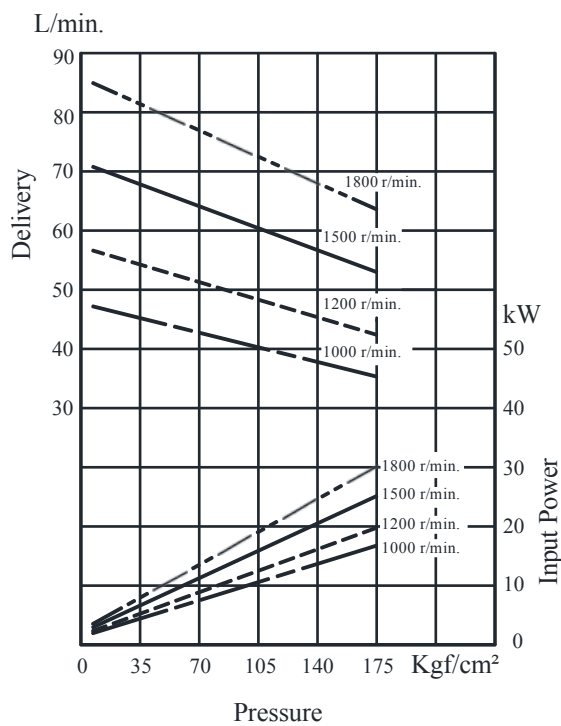
● **PVM50 - 45**



● **PVM50 - 51**



● **PVM50 - 56**



B

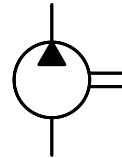
PVM Series
Single Vane Pumps

■ PVM 150 - Series Single Vane Pumps

These pumps are widely used as a source of hydraulic power in mobile application. They combine stable performance and robust construction with a wide range of delivery rates.



Graphic Symbol



■ Specifications

Model Number	Geometric Displacement cm ³ /rev.	Max. Opr. Pressure Kg/cm ²	Output Flow and Input Power	Shaft Speed Range r/min.		Mass (Approx.) Kg.	
				Max.	Min.	Flange Mounting	Foot Mounting
PVM150 – 60	47	175	Ref. Page 115 & 116	2000*	600	29.3	35.9
PVM150 – 70	57						
PVM150 – 90	75						
PVM150 – 110	92						
PVM150 – 140	115						
PVM150 – 170	135						

* For speeds above 2000 r/min., consult factory for information.

■ Model Number Designation

F-	PVM150	-L	-F	-60	-R	A	A	-34	80H01
Special Seals**	Series Number	Type of Mounting	Type of Pipe Connection	Nominal Delivery	Direction of Rotation	Discharge Port Position	Suction Port Position	Design * Number	Design Std
						As Viewed From Shaft End			
F: For Phosphate Ester Type Fluids (Omit if not required)	PVM150	L: Foot Type F: Flange Type	F: Flange Connection	60	R: Clockwise (Normal) L: Counter Clockwise			34	80H01
				70					
				90					
				110					
				140					
	170								

* Design numbers subject to change from 30 to 39, but installation dimensions remain as shown.

* For instructions regarding changing the port positions, consult CNIP INDIA LTD.

** Before ordering the Special Seals, consult CNIP INDIA LTD.

■ Mounting Details

For mounting details refer page No. 114.

■ Spare parts list

For list of spares please refer page No. 116.

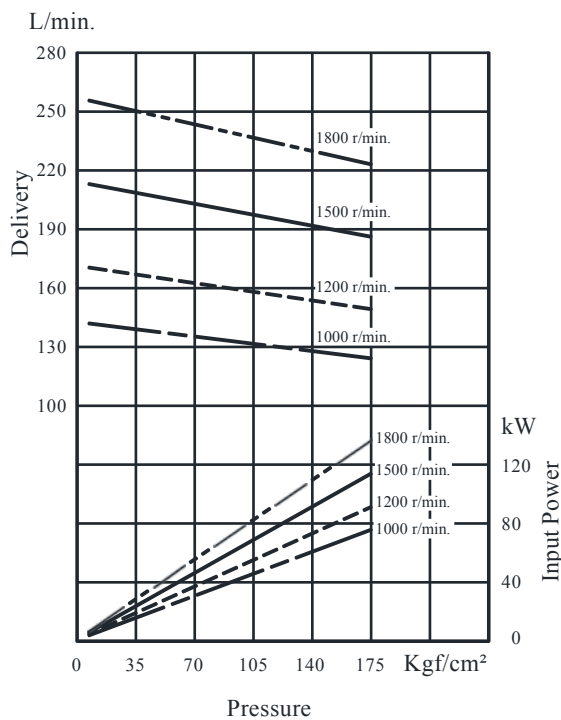
Cartridge Kit Model Number

CPVM150	-60	-R	-33H01
Model Number	Nominal Delivery	Shaft Rotation	Design No.
CPVM150	60	R: Clockwise (Normal)	33H01
	70		
	90		
	110	L: Counter- Clockwise	
	140		
	170		

* For instructions regarding replacing cartridge kit, consult CNIP INDIA LTD.

Typical Pump Characteristics Oil Viscosity 20 cSt [ISO VG 32, Temp 50° C]

● PVM 150 - 170



Cartridge Kit Model Number

Pump Model Numbers	Cartridge Kit Number #
PVM50-※-※-13-R※※-3180H01	CPVM50-13-R-31H01
PVM50-※-※-26-R※※-3180H01	CPVR50-26-R-31H01
PVM50-※-※-36-R※※-3180H01	CPVR50-36-R-31H01
PVM50-※-※-45-R※※-3180H01	CPVR50-45-R-31H01
PVM50-※-※-56-R※※-3180H01	CPVR50-56-R-31H01
PVM150-※-F-70-R※※-3480H01	CPVM150-70-R-33H01
PVM150-※-F-110-R※※-3480H01	CPVM150-110-R-33H01
PVM150-※-F-140-R※※-3480H01	CPVM150-140-R-33H01
PVM150-※-F-170-R※※-3480H01	CPVM150-170-R-33H01

* For instructions regarding replacing cartridge kit, consult CNIP INDIA LTD.

The above table does not include all combinations of cartridges available. Only a few representative samples are shown.

Flanges

Note: Please refer page no. 725 for flange details.